

A wide-angle shot of a planetarium audience. The dome ceiling is covered in a dynamic, multi-colored light show with streaks of purple, blue, and white light. The audience is seated in rows of chairs, looking up at the projection. The overall atmosphere is immersive and awe-inspiring.

# HUBBLO

**Bring your brands and events to life  
through a tailor-made immersive experience!**



# Connecting people to wonder!

Hubblo brings your brand to life and establishes a deep connection with your customers or partners, through memorable experiential marketing experiences.





Turnkey immersive dome offer for all types of events.







Optimized dome size with a diameter of 8 meters. Simple installation with assembly, disassembly, easy transportation and easy operation and maintenance. Production of tailor-made content.

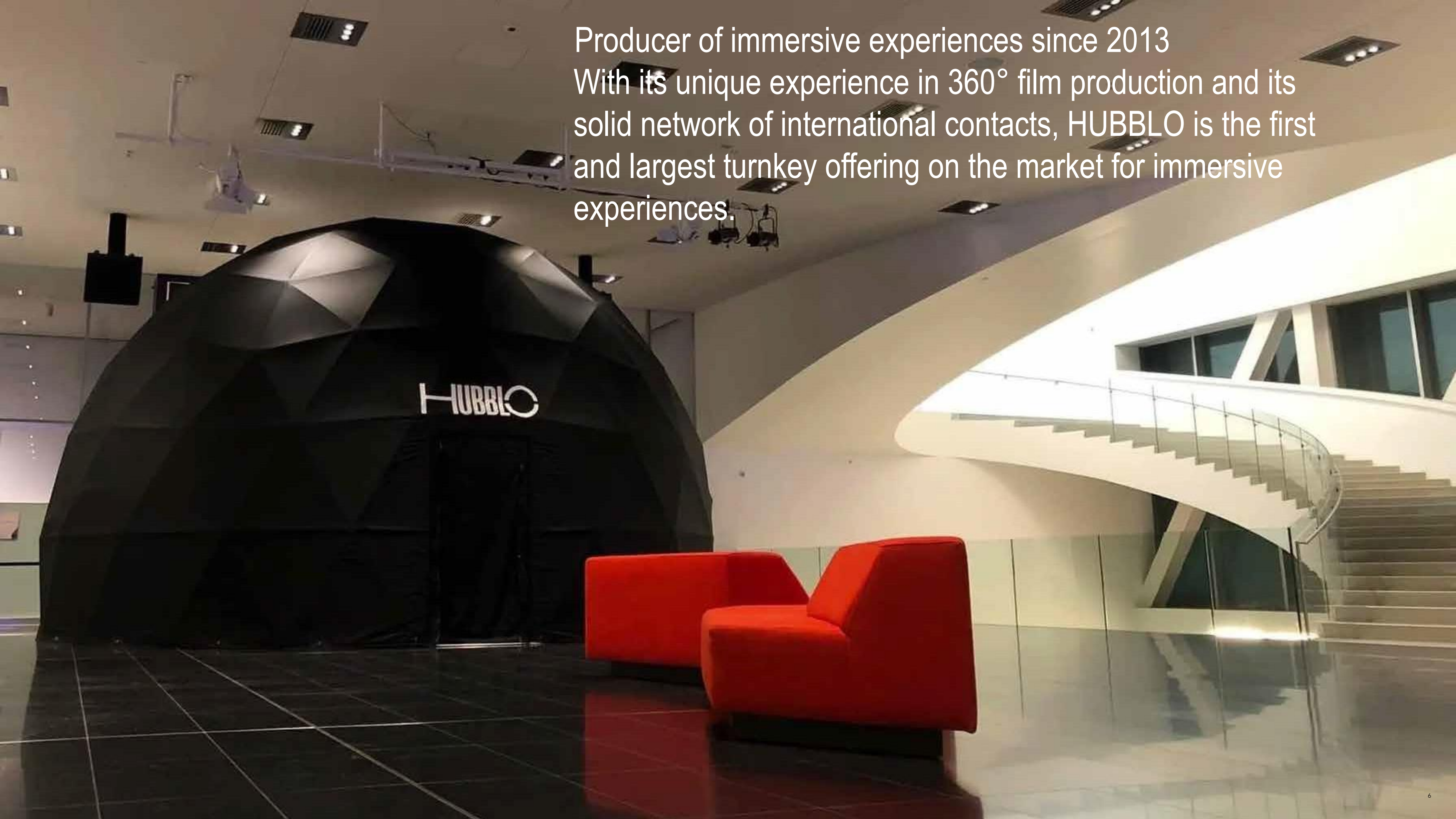




Our personalized solutions provide access to mobile domes that are intuitive and user-friendly, allowing you to reach your audience. We also have a partnership agreement with La Société des Arts Technologiques de Montréal for the use of their fixed dome and other facilities (catering, coat room, bar, etc.).



Producer of immersive experiences since 2013  
With its unique experience in 360° film production and its solid network of international contacts, HUBBLO is the first and largest turnkey offering on the market for immersive experiences.





**14 meter dome available**

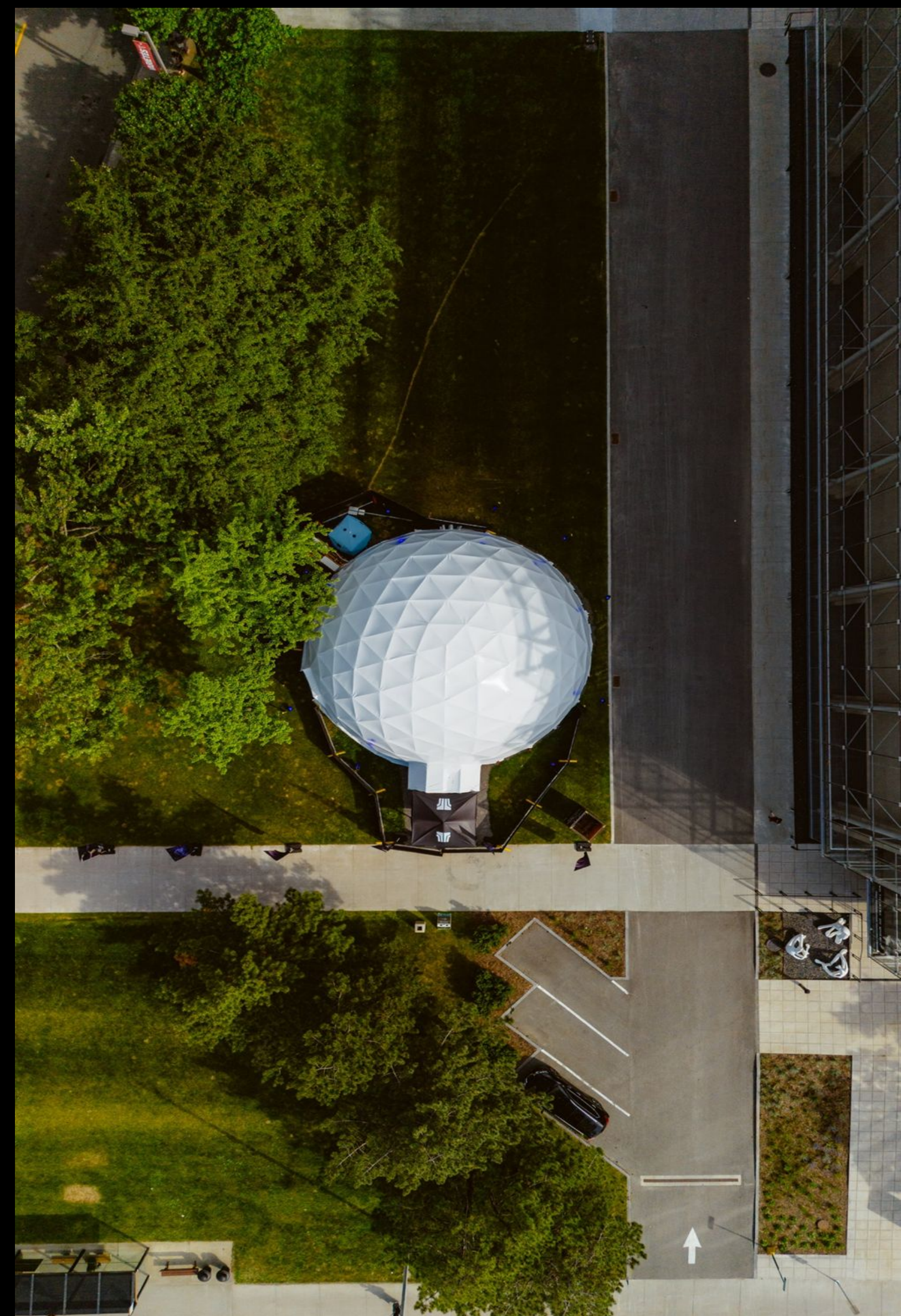


In the photo: Presentation of the Pink Floyd 50th anniversary experience at the Grand Théâtre de Québec in the summer of 2024.



# A FEW CLIENTS

- Felix & Paul
- National Film Board of Canada
- Ville de Montréal - Espace pour la vie - Planetarium
- Groupe Contex
- Montreal Symphony Orchestra
- Society for Arts and Technology
- ~~City of Montreal~~ ~~Centre Nordik~~
- AT&T Performing Arts Center - Dallas
- Tadamm féerie - France
- John F. Kennedy Center for the Performing Arts - Washington
- Jardins Nelson Mandela - New Images Paris
- Campus Innov - Larochele
- Palais de Chaillot - France
- Grand Palais Éphémère - France
- La Marge - Montréal
- Grand théâtre de Québec
- La Tribu - Montréal





# Prizes for our content



4 Best of Earth Awards in 2023, 5 prizes at Domes Fest West in 2022



Partnership with La SAT for your events in Montreal



# SOCIÉTÉ DES ARTS TECHNOLOGIQUES





**SOCIÉTÉ DES ARTS  
TECHNOLOGIQUES**

TECHNICAL SPECS FOR THE DOME

**SAT / Satosphère**  
Interior / Exterior

Possibilities:

Projections Receptions

Cocktail ou Dining Cocktail Restaurant / Bar  
/ Terrasse

Présentation of products

Diameter: 18m (59pi)

Height: 11,5m (37,7pi)

Surface: 154 m<sup>2</sup>

Capacity of The Satosphère:

Sitting Tables: 150 people

Standing: 350 people

Capacity SAT: 990 people





HUBBLO

EXPERIENCE IMMERSIVE

PINK FLOYD - THE DARK SIDE OF THE MOON



A large audience of people is seated in a dark room, looking up at a large curved screen. The screen displays a detailed view of the lunar surface, covered in craters and rocks. In the center of the screen, a lunar rover is visible, positioned as if on the moon's surface. The scene is illuminated by the light from the screen, creating a sense of immersion.

Contact:  
Jean-Philippe Turgeon /  
[jp@hubblo.ca](mailto:jp@hubblo.ca)  
514-951-4346